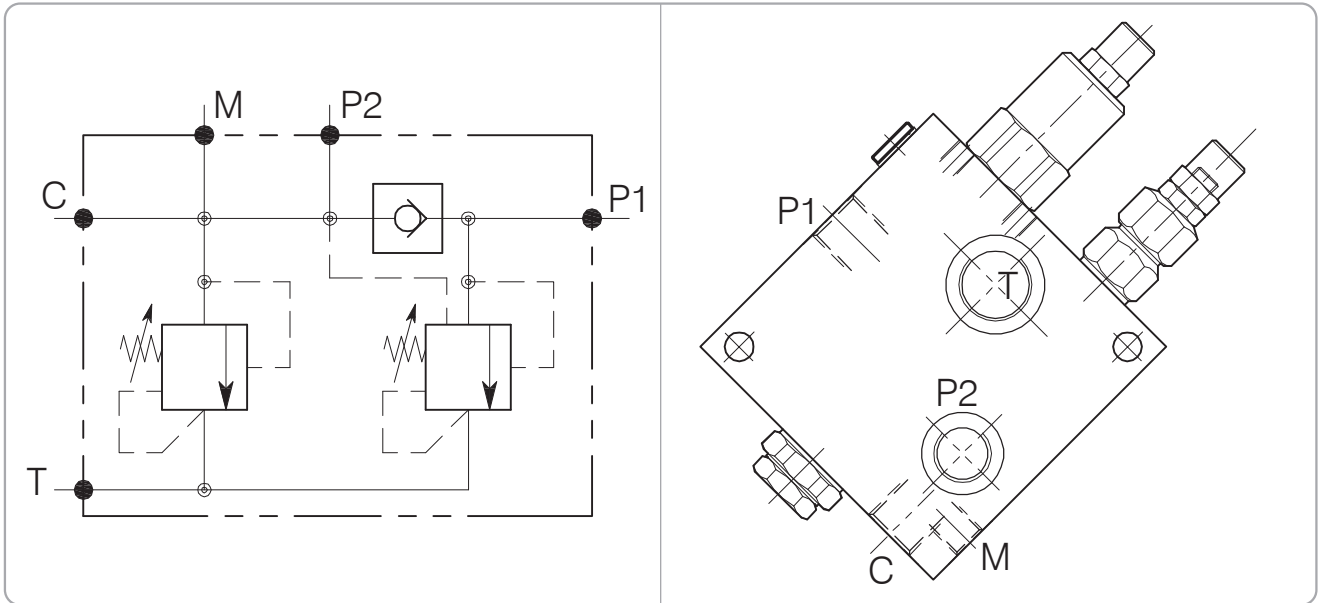


VD-34-12-14

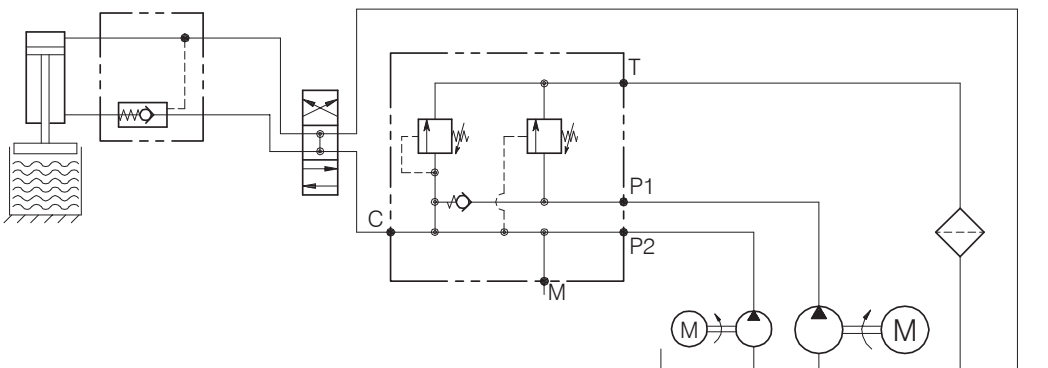
PUMP UNLOADING VALVE WITH ADDITIONAL REFIL AND IN LINE BODY



Performance

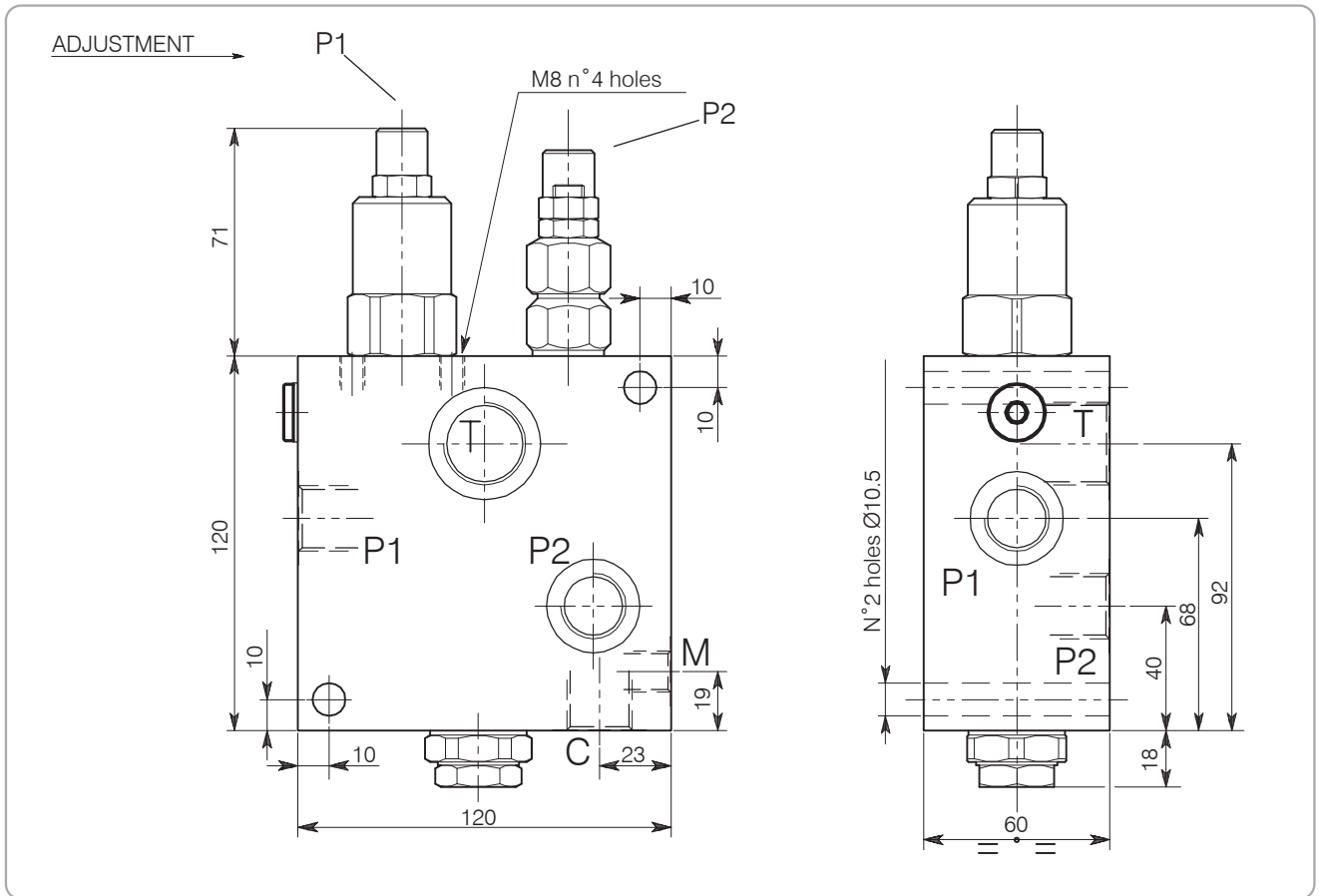
Rated size	DN 10
Max flow-rate	90 l/min - 22 GPM
Max working pressure	350 bar - 5075 PSI
Max setting pressure	350 bar - 5075 PSI
Room temperature	-30°C + 50°C
Oil temperature	-30°C + 80°C
Recommended filtration	30+50 micron
Weight	2.796 Kg

Typical Circuit Example



VD-34-12-14

Hydraulic valves and integrated components



Dimensions

Setting Range	Port size T GAS (BSPP)	Port size P1-P2 C GAS (BSPP)	Port size M GAS (BSPP)	Rated size DN	Max flow-rate l/min - GPM
46	3/4"	1/2"	1/4"	10	90-22

Ordering Code

2 • 4 6 • 0 • X • 0

Setting Range				
(P2)		46	(P1)	
Setting range 20÷350 bar (yellow spring)		Setting range 10÷90 bar (yellow spring)		
Std. bar setting (Q=5 l/1') 280 bar	Pressure rise - turn of screw (--)	Std. bar setting (Q=5 l/1') 40 bar	Pressure rise - turn of screw (--)	